

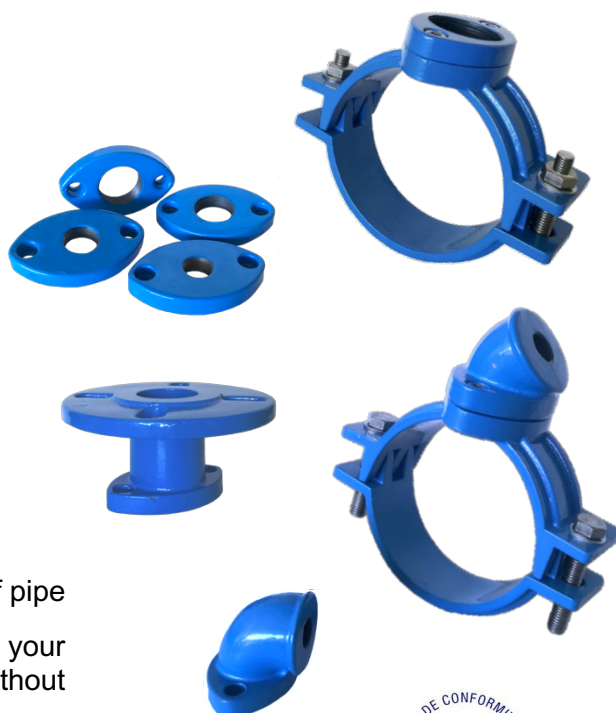
MULTIBIV SADDLE

Innovative multi-diameter universal saddle, able to adapt to different diameters of both plastic and rigid pipes and to different outputs thanks to its design.

With few references a wide variety of needs can be covered.

FEATURES

- **Nominal pressure:** PN16
- **Operating temperature:** from 0°C to 80°C
- Two mounting positions depending on the type of pipe
- Their interchangeable outputs allow you to select your preferred output and even change them without disassembling the saddle
- The MultiBIV saddles have **ACS product certificate**



Granted the National Utility Model with application number U202032262



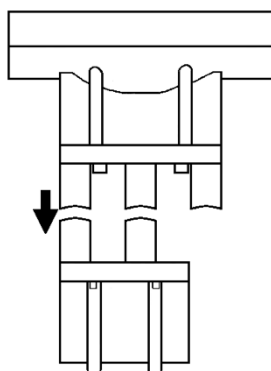
Oficina Española
de Patentes y Marcas

MATERIALS

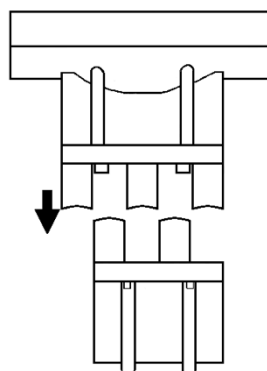
- **Upper part, lower part and outputs:** Ductile iron EN-GJS-500-7 according to UNE-EN 1563
- **Gaskets:** EPDM according to UNE-EN 681-1
- **Bolts:** Stainless steel AISI 304 according to UNE-EN 10088-1 (with tefloned nuts)
- **Coating:** Blue epoxy (RAL 5015) thickness 250 µm according to ISO 8179

SKETCH OF ITS 2 MOUNTING POSITIONS

POSITION FOR
PLASTIC PIPES



POSITION FOR
RIGID PIPES

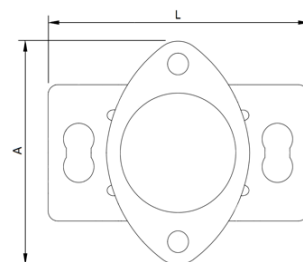


DIMENSIONS

MULTIBIV	RIGID PIPES				PLASTIC PIPES
	FIBER CEMENT	DUCTILE IRON	BLUTOP	STEEL	PE / PVC / BIORIENTED PVC
E63 (50-63)	-	-	-	D60,3	D63
E75 (64-75)	D66	DN50	DN75	D73	D75
E90 (76-90)	D76-88	DN65	DN90	D88,9	D90
E110 (96-110)	D98-100	DN80	DN110	-	D110
E125 (111-125)	D116-124	DN100	DN125	D114,3	D125
E140 * (126-140)	-	-	-	-	D140
E160 (141-160)	D143-155	DN125	DN160	D141,3	D160
E180 (161-180)	D170-178	DN150	-	D168,3	D180
E200 (181-200)	D186-197	DN175	-	D195	D200
E225 (201-225)	D203-224	DN200	-	D219,1	D225
E250 * (226-250)	D232-248	-	-	-	D250
E280 (261-280)	D272-280	DN250	-	D273	D280
E315 (292-315)	D284-310	-	-	-	D315
E355 (324-355)	D324-350	DN300	-	D323,8	D355

* Under development

MULTIBIV	STRAIGHT THREADED OUTLET		L	A
	REF	THREAD		
E63 (50-63)	5865	3/4"	136	118
	5866	1"		
	5867	1 1/4"		
	5868	1 1/2"		
	5869	2"		
E75 (64-75)	5872	3/4"	148	118
	5873	1"		
	5874	1 1/4"		
	5875	1 1/2"		
	5876	2"		
E90 (76-90)	5879	3/4"	163	118
	5880	1"		
	5881	1 1/4"		
	5882	1 1/2"		
	5883	2"		
E110 (96-110)	5886	3/4"	183	118
	5887	1"		
	5888	1 1/4"		
	5889	1 1/2"		
	5890	2"		
E125 (111-125)	5893	3/4"	198	118
	5894	1"		
	5895	1 1/4"		
	5896	1 1/2"		
	5897	2"		
E160 (141-160)	5914	3/4"	233	118
	5915	1"		
	5916	1 1/4"		
	5917	1 1/2"		
	5918	2"		
E180 (161-180)	5921	3/4"	253	118
	5922	1"		
	5923	1 1/4"		
	5924	1 1/2"		
	5925	2"		
E200 (181-200)	5928	3/4"	273	118
	5929	1"		
	5930	1 1/4"		
	5931	1 1/2"		
	5932	2"		
E225 (201-225)	5928	3/4"	298	118
	5929	1"		
	5930	1 1/4"		
	5931	1 1/2"		
	5932	2"		



STRAIGHT THREADED OUTLET	
REF	THREAD
5960	3/4"
5961	1"
5962	1 1/4"
5963	1 1/2"
5964	2"

ANGLED OUTLET 45°	
REF	THREAD
5975	3/4"
5976	1"
5977	1 1/4"
5978	1 1/2"

ANGLED OUTLET 90°	
REF	THREAD
5985	3/4"
5986	1"
5987	1 1/4"
5988	1 1/2"

FLANGED OUTLET	
REF	DN
5995	50 / 60 / 65

MULTIBIV	STRAIGHT THREADED OUTLET		L	A
	REF	THREAD		
E280 (261-280)	5942	3/4"	353	118
	5943	1"		
	5944	1 1/4"		
	5945	1 1/2"		
	5946	2"		
E315 (292-315)	5949	3/4"	388	118
	5950	1"		
	5951	1 1/4"		
	5952	1 1/2"		
	5953	2"		
E355 (324-355)	5650	3/4"	428	118
	5651	1"		
	5652	1 1/4"		
	5653	1 1/2"		
	5654	2"		